

ENGINEERED  
TO BE THE BEST

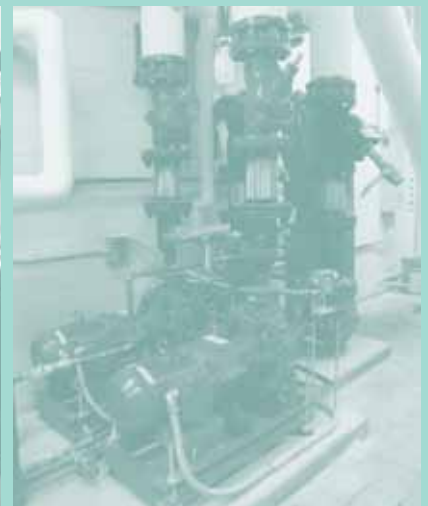


2017 Product Overview

# Dynamix Hydro Systems



[www.dynamixpumps.com](http://www.dynamixpumps.com)



Dynamix Hydro Systems is the industry leader in supplying comprehensive pumping solutions with superior quality and energy efficiency.

The Dynamix line of dependable, efficient pumps are the result of more than 60 years of design and manufacturing expertise and refinement.

We offer a wide range of products, all carrying CE and UL certification along with five star efficiency rated by BEE.

Dynamix pumps are constructed of the finest materials and utilize state-of-the-art manufacturing technologies to design and build precision-manufactured products that deliver peak performance day after day.

We also have the engineering expertise and flexibility to design and develop customized products to meet specific customer requirements.

Dynamix pumps are easy to maintain reducing downtime. Dynamix pumps are on the job every day - rugged, reliable and engineered to be the best.





## DXCR Vertical Multistage Pumps

Non-self-priming, vertical multistage centrifugal pumps. Pumps are suitable for a wide range of applications from pumping potable water to pumping chemicals

### Features and Benefits

- Flow rate: 0.3 to 120 m<sup>3</sup>/h (1.32 - 528.3 gpm)
- Head up: Up to 320 meters (1050 ft.)
- Ambient temperature: Max. + 40°C (104°F)
- Equipped with a maintenance-free mechanical, bellow-type shaft seal
- Available in various sizes with various numbers of stages to provide adequate flow and pressure for different site conditions
- Available in various materials including cast iron, stainless steel 304 and stainless steel 316

## DXCC Monoblock Centrifugal Pumps

Non self-priming, horizontal, single-stage, centrifugal volute casing pump with axial suction and radial discharge

### Features and Benefits

- Discharge range from 3 – 660 m<sup>3</sup>/hr
- Head range from 4 – 158 meters.
- Motor ratings from 0.37 to 132 kW
- Long coupled with TEFC squirrel cage induction motors. EFF2 motors standard. EFF1 motors available on request.
- Available with gland packing or mechanical seal
- Available with fabricated steel base framing
- Impellers are dynamically balanced to grade 6.3 of ISO 1940
- Pull-out back design allows the removal of the motor, bearing bracket and impeller for servicing without disturbing the volute casing and suction and delivery piping



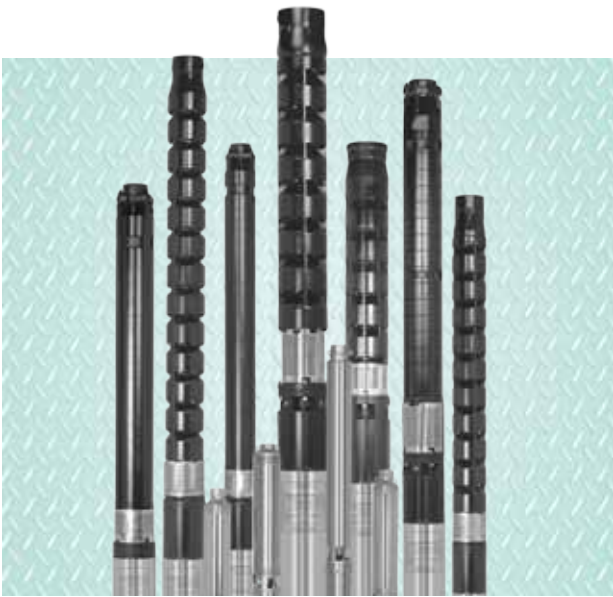
## DXHC Horizontal Split Case Pumps

Horizontal split case pumps with a horizontal pump shaft. The DXHC range is available in single-stage and two-stage models

### Features and Benefits

- Discharge range from 20 - 1320 m<sup>3</sup>/h (88 to 5812 gpm)
- Head range from 4 - 88 m (13 to 518 ft.)
- Motor ratings from 3 to 160 kW
- EFF2 motors are standard. EFF1 motors are available on request.
- Available with gland packing and mechanical shaft seal
- Impellers dynamically balanced to grade 6.3 of ISO 1940
- Pumps can be supplied as a complete unit with motor, coupling, coupling guard and fabricated steel base frame
- Split case construction enables removal and dismantling of the internal parts without disturbing the motor and pipe work





## DXCI Submersible Pumps

Cast Iron Submersible Pumps are available from 4" to 12 "

### Features and Benefits

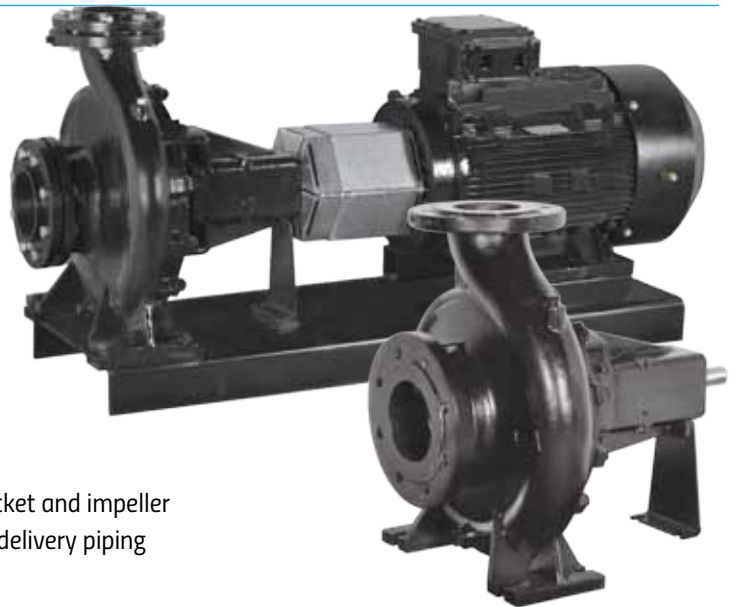
- Designed using computational fluid dynamics to ensure maximum efficiency
- Designed using materials that will work with sand found in borewells
- Journal bearings and impeller wear rings are made of nitrile rubber to ensure peak performance and long service life
- All pumps provided with upthrust bearing to control the axial movement of the impeller assembly during transportation and start-up
- Low friction, non-return valve reduces water hammer when stopped
- Impellers are individually balanced to grade 6.3 ISO 1940
- Shaft is protected by stainless steel sleeves which are easily replaced
- All components are machined using state-of-the-art CNC machines to ensure dimensional accuracy

## DXBS Bare Shaft Centrifugal Pumps

Non-self-priming, horizontal, single-stage, centrifugal volute casing pump with axial suction and radial discharge

### Features and Benefits

- Discharge range from 3 – 660 m<sup>3</sup>/hr
- Head range from 4 – 158 meters
- Motor ratings from 0.37 to 132 kW
- EFF2 motors standard. EFF1 motors available on request.
- Available with gland packing or mechanical seal
- Available with fabricated steel base framing
- Impellers are dynamically balanced to grade 6.3 of ISO 1940
- Pull-out back design allows the removal of the motor, bearing bracket and impeller for servicing without disturbing the volute casing and suction and delivery piping



## DXVI Vertical Inline Pumps

Non-self-priming, single-stage, vertical inline, close-coupled type centrifugal pumps having radial suction and radial discharge port

### Features and Benefits

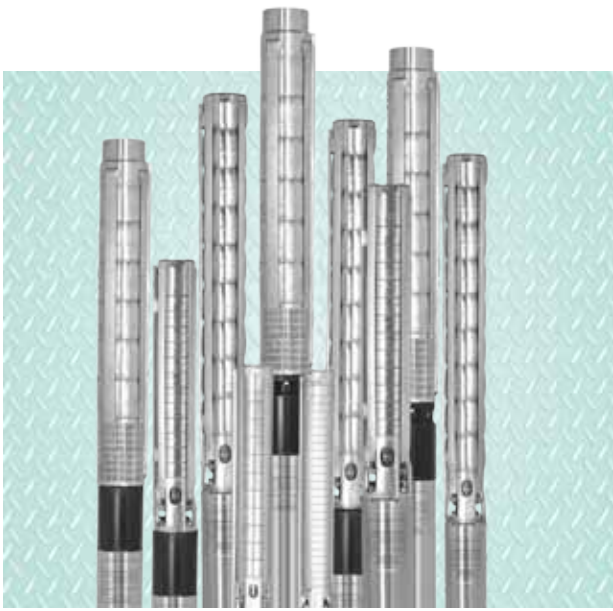
- Discharge range up to 600 m<sup>3</sup>/h
- Head range up to 150 meters
- Motor ratings up to 132 kW.
- Offer floor space savings versus end suction and horizontal split case pumps
- Inline construction makes pipework easier. Pipe and fittings offer adequate support for most installations
- Large inlet passages have flow straightening vanes to provide excellent suction performance and extremely quiet operation
- EFF2 motors standard - EFF1 motors available on request



**DYNAMIX HYDRO SYSTEMS**

6850 N. Haggerty Rd., Canton, MI 48187 USA

+734.454.8835 ▪ sales@dynamix pumps.com ▪ www.dynamix[pumps].com



## DXSS Stainless Steel Submersible Pumps

Stainless Steel Submersible Pumps are available from 4" to 10 "

### Features and Benefits

- Pumps are fabricated from AISI 304 stainless steel
- Pumps equipped with water lubricated rubber wear rings and bush bearings designed to work well in sand found in well water
- State-of-the-art computerized design for higher efficiency
- Stainless steel sheet construction offers a very low co-efficient of friction reducing energy consumption
- Pump can withstand harsh, abrasive and corrosive environments
- All pumps are equipped with a reliable non-turn valve to prevent back flow and reduce water hammer when stopped



## Drainage & Sewage Pumps

Dynamix offers a complete line of sewage and drainage pumps suitable for a wide range of applications

- DXAP Drainage Pumps – 0.5 to 3.0 HP
- DXAS Heavy Duty Construction Pumps – 1.5 to 15 HP
- DXBP Stainless Steel Submersible Effluent Vortex Pumps
- DXFP Sewage Pumps 1.0 to 3.0 HP
- DXGP Grinder Pumps 1.0 to 5.0 HP
- DXHP Heavy Duty Sewage Pumps 5.0 to 30.0 HP
- DXLP Large Volume Water Pumps 3.0 to 15.0 HP
- DXMP Composite Case Submersible Drainage Pumps
- DXSP Cast Iron Submersible Drainage Pumps



## Submersible Motors

## Pressure Booster Sets

## Solar-Powered Pumps

## Domestic and Residential Pumps

**Dynamix Pumps are made from the finest materials and designed and manufactured with the latest state-of-the-art precision technologies**



**DYNAMIX HYDRO SYSTEMS**

6850 N. Haggerty Rd., Canton, MI 48187 USA

+734.454.8835 ▪ sales@dynamixpumps.com ▪ www.dynamixpumps.com

# Dynamix Fire Fighting Pumpsets

Dynamix Hydro Systems Fire Fighting Pumpsets are designed with your safety in mind. Manufactured from the finest materials and crafted using the latest state-of-the-art technologies, Dynamix pumpsets protect your investments and insure the safety of your building's occupants.

All Dynamix fire pumpsets meet or exceed the requirements set by NFPA 20. They are available in Horizontal Split Case and End Suction variants with your choice of electric or diesel power. Dynamix fire pumpsets offer discharge ranges from 500 to 3,000 gpm and head ranges from 40 to 230 psi. All main components, with the exception of the fuel tank and common controller, are mounted on a common base frame offering a compact, efficient solution. Dynamix can also supply a complete packaged system with all required accessories ready for site installation.



**LISTED**  
EX26631

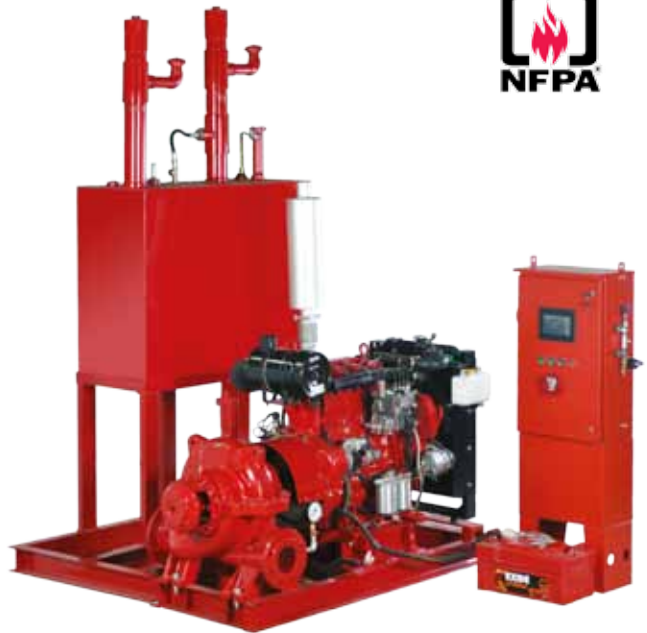
**Selected Models**



APPROVED



**DXSD Series End Suction,  
Diesel Engine Driven, Fire Pumpset**



**DXCD Series Horizontal Split Case,  
Diesel Engine Driven, Fire Pumpset**



**DXSE Series End Suction,  
Electric Motor Driven, Fire Pumpset**



**DXCE Series Horizontal Split Case,  
Electric Motor Driven, Fire Pumpset**



**DYNAMIX HYDRO SYSTEMS**

1321 Upland Dr., Houston, TX 77043 USA

+713.474.9010 ■ sales@dynamixpumps.com ■ www.dynamixpumps.com

